

GAS DETECTOR - TYPE ED 210



The ED210 - I.S. Gas Detector has been specifically designed to meet the requirements for work boat regulations. The equipment provides a very convenient all in one answer to the necessary visual and audio alarms, together with a unique safety circuit driving an automatic shut off valve in the gas pipeline in the event of a leak being detected.

The ED210 - I.S. benefits from being designed and manufactured by a company of long standing in safety detection equipment for the marine world with extensive ABS and BASEEFA Certification.



APPROVED BY



Baseefa2001 Certified
EEx ia IIC



Quality Assurance to
Baseefa2001 Regulations
Certificate Number: 0344

FEATURES

- Designed to meet ATEX requirements for gas detection on commercial pleasure craft.
- 2 sensor capability wide spectrum provides protection against many hazards eg many Toxic gases in addition to flammable gas.
- Non-poisoning, robust, well proven sensors give many years of trouble free service. Sensors are ABS type approved.
- Integral fault audible and visual alarms.
- Built-in low consumption valve drive circuit.
- Provision of special valve safety circuit.
- Separate models provide for 12V and 24V DC supply.
- Fully self-contained for ease of installation.

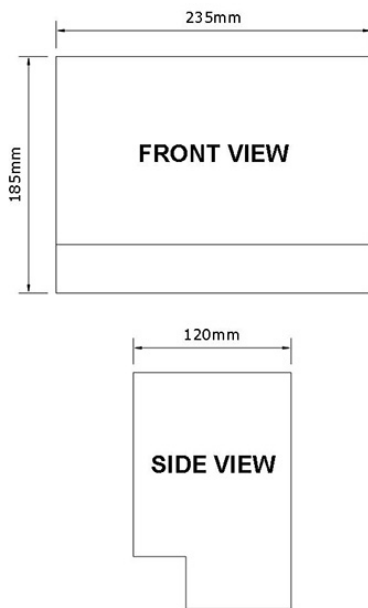
HAZARDOUS AREA

BASEEFA Certified Intrinsically Safe to EEx ia IIC T4.

The ED210 is available uncertified for smaller craft. Where the lower cost Polypropylene housed sensors can be utilised. The 210 can be used with the EDP 1A, EDP 2A or EDP 3A gas sensors.

CONTROL UNIT

Enclosure: ABS Enclosure
Mounting: Wall/Bulkhead
Consumption: 0.5A Maximum (12 or 24V DC)
Weight: Approx 1Kg max

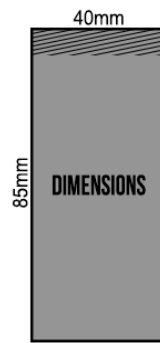


SENSORS

Enclosure: Marine grade stainless steel
Mounting: Wall/Bulkhead, or Male thread M32.
Consumption: 100mA each.
Dimensions: 85mm x 40mm diameter.
Weight: Approx 0.5Kg

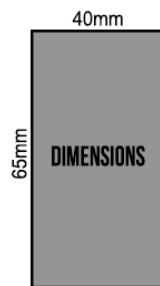
The EDF Sensor is suitable for direct internal tank mounting using the M32 male thread or via suitable adaptors to conduit, junction boxes etc.

Type EDF 1A, 2A or 3A
(Stainless Steel) EExd IIC T6
Weight: 0.5 Kg
M32 male thread



Type EDF 1A, 2A or 3A (Stainless Steel)
II 2 G EExd IIC T6
Weight: 0.5 Kg
M32 male threadplanes.

Type EDP 1A, 2A or 3A
(Polypropylene) Uncertified, not suitable for Hazardous Areas.
For use with the ED210 not ED210 - I.S.



Type EDP 1A, 2A or 3A (Polypropylene)
Uncertified, not suitable for Hazardous Areas.

MAINS OPERATION

If the ED210 - I.S. is to be powered from an AC mains supply, the ABS type approved Type 3 Power Supply Unit may be used. The Power Supply Unit will also charge and house 24V sealed lead acid batteries (max 12AH) accepts 110, 120, 220, 230, 240 and 254V 50/60Hz mains supplies and provides up to 27.6V at 5A.

OUTPUTS

1. Audible Alarm - Acceptable
2. Valve Supply - Switched with safety circuit.

GUARANTEE

Fully guaranteed for 12 months from date of purchase for parts and labour.

GAS VALVE

In line 3/8" BSP 12V / 24VDC 1.9W which is reduced to approximately half this value by the built in fail safe circuitry of the ED210 - I.S. Overall dimensions are 75mm x 80mm including the waterproof plug provided.

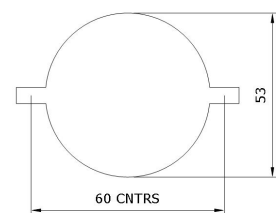
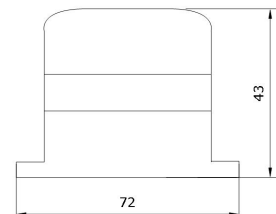
Mounting: Wall/Bulkhead
Consumption: 1.2W(0.1A – 12V
0.05A – 24V)
Weight: Approx 0.5Kg
Connections: 3/8" BSP female connections
Rating: 1.5 bf/in2 max ie takes standard LPG Regulator output

AUDIO ALARMS

Type ED4 or Type ED6 ABS Approved

Mounting: Wall/Bulkhead
Consumption: 20mA max at 12/24V DC
Sound Output: 110dBA and 115dBA at 0.3mu. respectively, continuous or pulsed.
Weight: Approx 0.11Kg

ED6 DIMENSIONS



Also available in this range of gas detectors are the following models:

ED 910, ED 810, ED 811